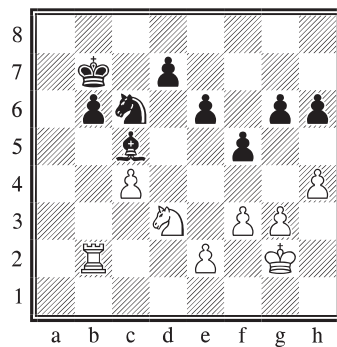
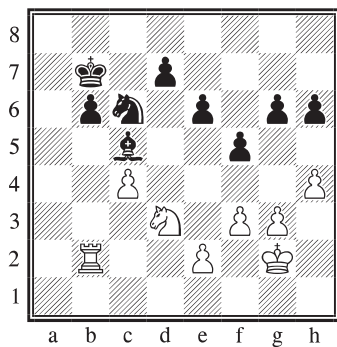
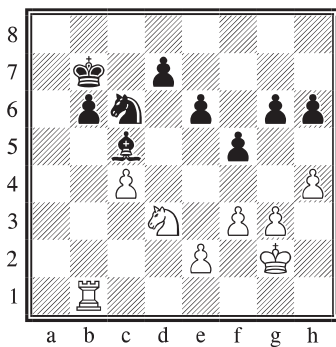
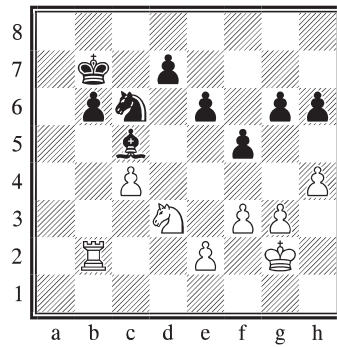
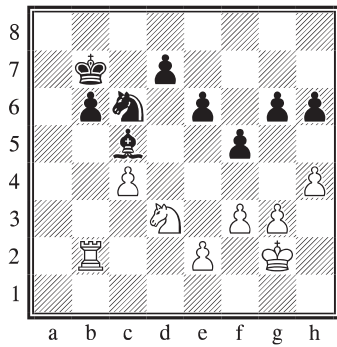
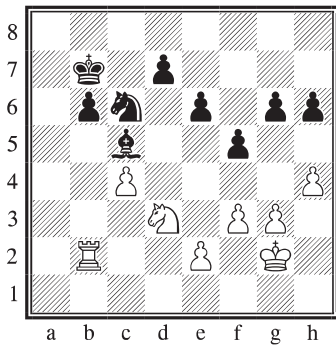
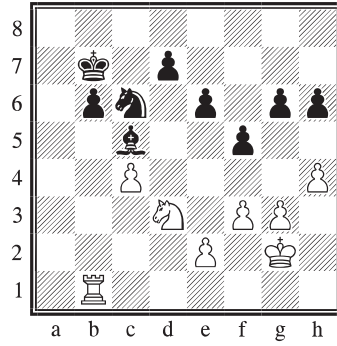
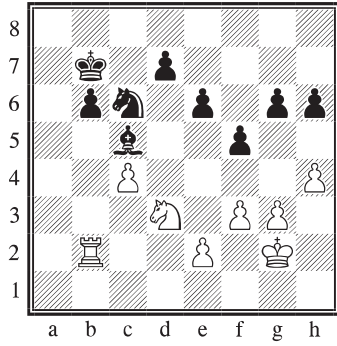
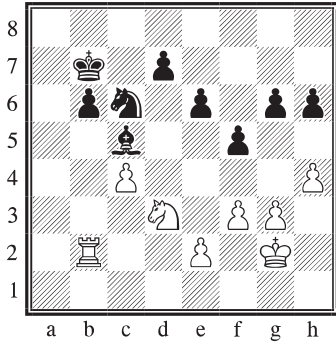




Les jumeaux :

Parmi ces neuf diagrammes deux seulement sont différents des autres mais rigoureusement identiques entre eux. Retrouve-les et entoure-les.

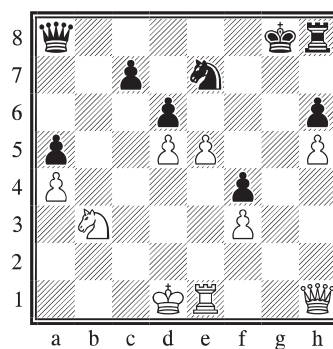
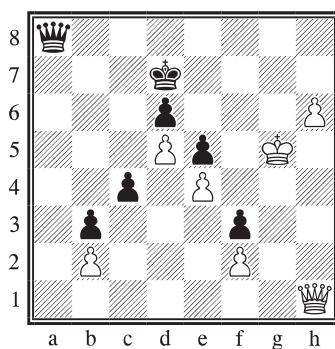
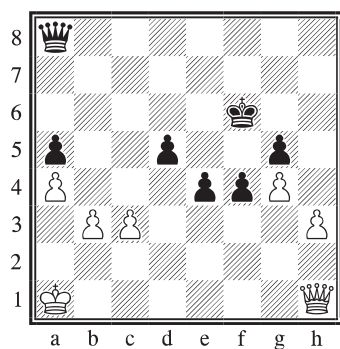
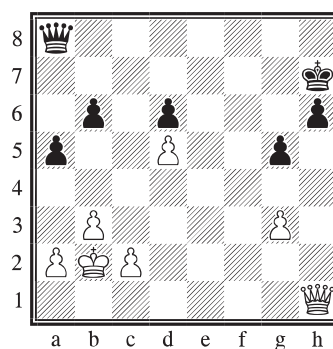
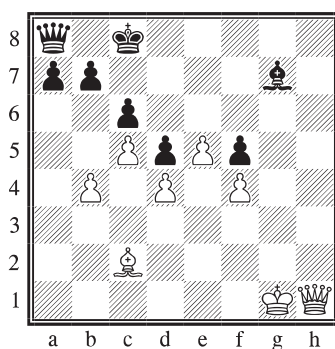
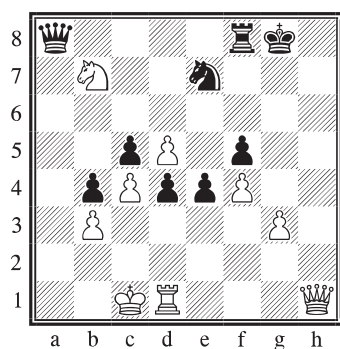


**Les points communs :**

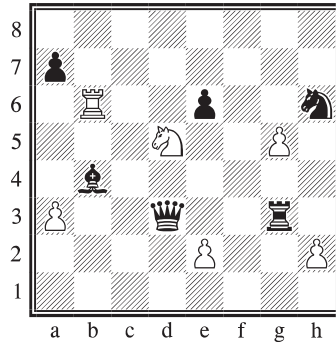
Compare ces six positions. Compte le matériel pour chaque camp et regarde la position des pièces.

Quels sont les **deux points communs** à ces **six diagrammes** ?

Écris tes réponses sous les diagrammes.

**Solutions :**

1. Sur chaque diagramme, il y a toujours **cinq pions blancs** et **cinq pions noirs**.
2. Sur chaque diagramme, les **Blancs ont toujours une Dame en h1 (Dh1)** et les **Noirs toujours une Dame en a8 (Da8)**



Dans cette position, les pions blancs et noirs effectuent des prises. Une fois toutes les prises effectuées quelle sera la position exacte des pions sur l'échiquier ?

Entoure le diagramme avec la bonne solution

Diagramme n° 1

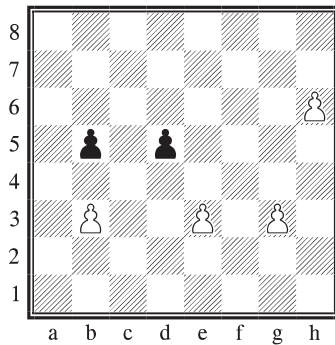


Diagramme n° 2

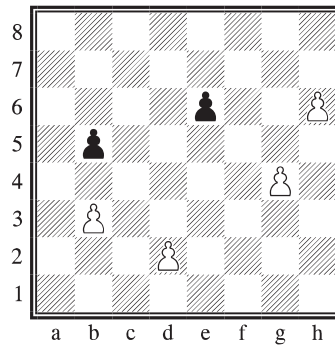


Diagramme n° 3

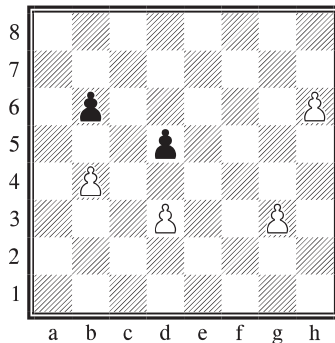
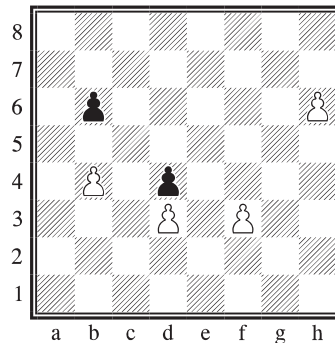


Diagramme n° 4



Qui a le plus de pièces ?