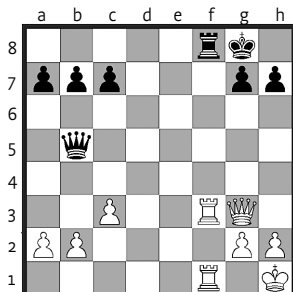




## Leçons 1, 2, 3 et 4 Corrigés du contrôle



1 **T f1\*** / **D x f1+**

de Gréco ?

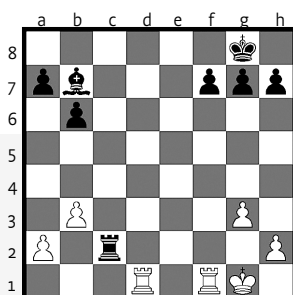
2 **T x f1** / **T x f1#**

du couloir ?

\* les Blancs menacent : T x f8#

de Morphy ?

de pièces lourdes ?



1 **T d1\*** / **T g2+**

de Gréco ?

2 **R h1** / **T x g3+**

du couloir ?

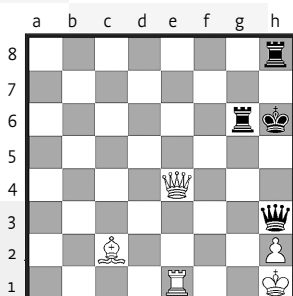
3 **T d5** / **F x d5+**

de Morphy ?

4 **T f3** / **F x f3#**

de pièces lourdes ?

\* les Blancs menacent : T d8#



1 **D e4** / **D x h2+**

de Gréco ?

2 **R x h2** / **R g7+**

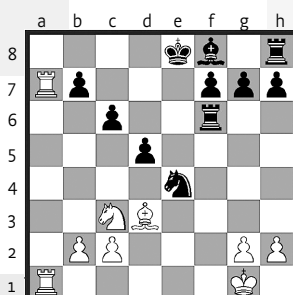
du couloir ?

3 **D h4** / **T x h4#**

de Morphy ?

\* les Blancs menacent : D x g6#

de pièces lourdes ?



1 **T x a7** / **F c5+**

de Gréco ?

2 **R h1** / **C g3+**

du couloir ?

3 **h x g3** / **T h6#**

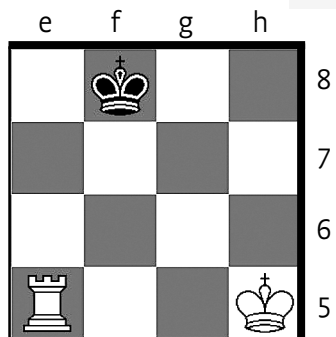
de Morphy ?

de pièces lourdes ?



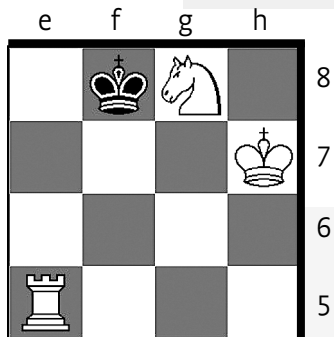
# Jeux

## Les Blancs matent avec la Tour



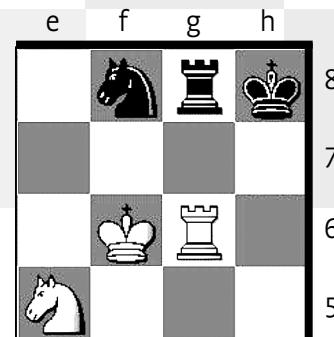
1 ..... / .....

2 ..... #



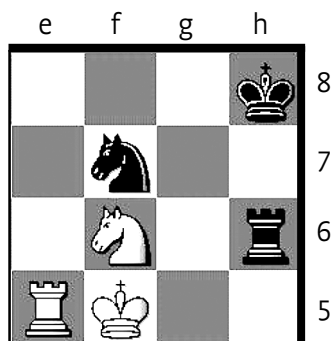
1 ..... / .....

2 ..... #



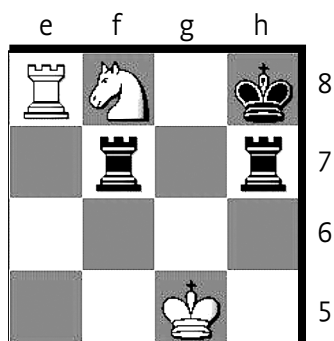
1 ..... / .....

2 ..... #



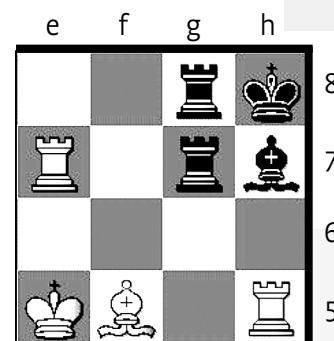
1 ..... / .....

2 ..... #



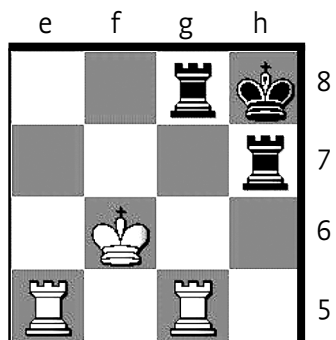
1 ..... / .....

2 ..... #



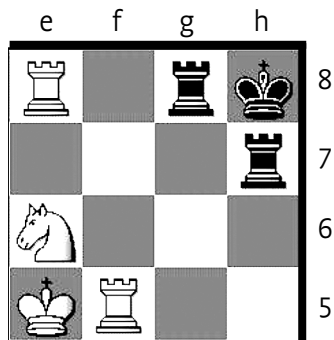
1 ..... / .....

2 ..... #



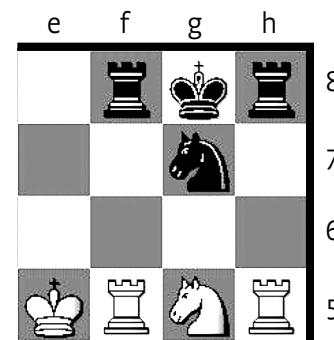
1 ..... / .....

2 ..... #



1 ..... / .....

2 ..... #



1 ..... / .....

2 ..... #